

comloda

Breathe Confidence.

Advanced air quality monitoring for healthier spaces



Continuous IAQ Intelligence

GARD

www.gord.qa

What's Comlada?

Comlada is an advanced Air Quality Monitoring System (AQMS) developed by the Gulf Organisation for Research & Development (GORD). It serves as a hybrid solution for indoor air quality testing, combining high-precision sensors with IoT-enabled software to deliver real-time, continuous monitoring of up to 20 indoor pollutants and environmental parameters. From PM2.5 and CO₂ to formaldehyde, ozone, and VOCs, Comlada provides reliable, science-based insights that help organizations improve occupant health, enhance comfort, and achieve compliance with leading green building standards such as GSAS, WELL, and GSB Healthy Building Label.



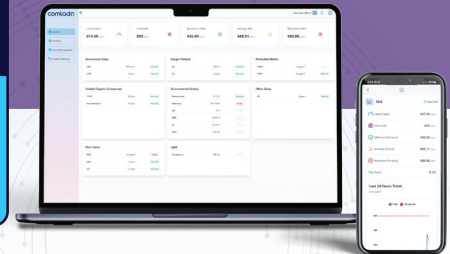
comlada
Breathe Confidence.

Why Comlada?

Comlada safeguards human health and wellbeing by delivering comprehensive indoor air quality intelligence. By accurately tracking more than 20 critical pollutants and environmental conditions it helps identify invisible risks that affect breathing, productivity, and overall wellness.

20+

pollutants & environmental parameters measured by Comlada



PM2.5 PM10 CO₂ (Carbon Dioxide)

TVOC (Total Volatile Organic Compounds)

Formaldehyde (HCHO) Ozone (O₃)

Carbon Monoxide (CO) Methane (CH₄)

Sulfur Dioxide (SO₂) Nitrogen Dioxide (NO₂)

Hydrogen Sulfide (H₂S) Ammonia (NH₃)

Oxygen (O₂) Hydrogen (H₂) Air Temperature

Relative Humidity Illuminance (Light Intensity)



Noise Levels Air Pressure

Heat Index & Wet Bulb Temperature

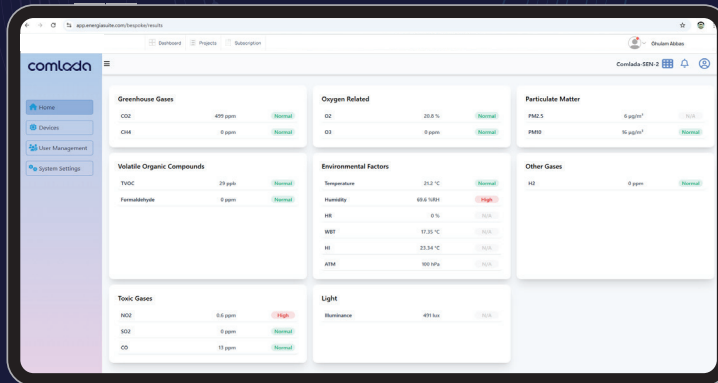
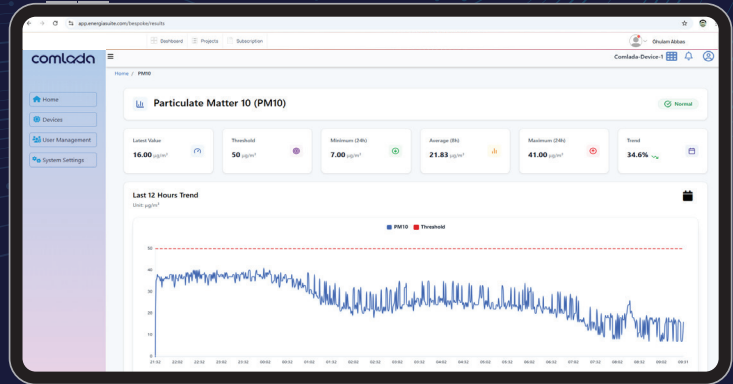
 <p>Real-Time Monitoring</p>	 <p>Instant Plug & Play Setup</p>
 <p>User-friendly Interface</p>	 <p>Customizable, Intuitive Dashboard</p>
 <p>Robust Data Protection</p>	 <p>Remote Access</p>
 <p>Actionable Data Analytics</p>	 <p>Automated Compliance Reports</p>
 <p>Installation Flexibility</p>	 <p>Powerful Monitoring Sensors</p>
 <p>High Precision Data</p>	 <p>Local Support & Calibration Services</p>

Applications

Comlada adapts seamlessly to diverse environments, delivering healthier, smarter, and safer indoor spaces.

 <p>Residential Units/Buildings</p>		 <p>Offices</p>
	<p>Hospitality & Hotels</p>	
 <p>Educational Institutes</p>		<p>Healthcare Facilities</p>
	<p>Laboratories</p>	
<p>Sports Facilities</p>		 <p>Public Spaces (Malls, Libraries, etc.)</p>

Comlada Dashboard



Breathe Confidence.

comlada

comlada

Breathe Confidence.



Designed & Manufactured by:



Accelerating Green Solutions
for a Sustainable Future



Tel: +974 4141 5000
PO Box: 210162, Doha Qatar